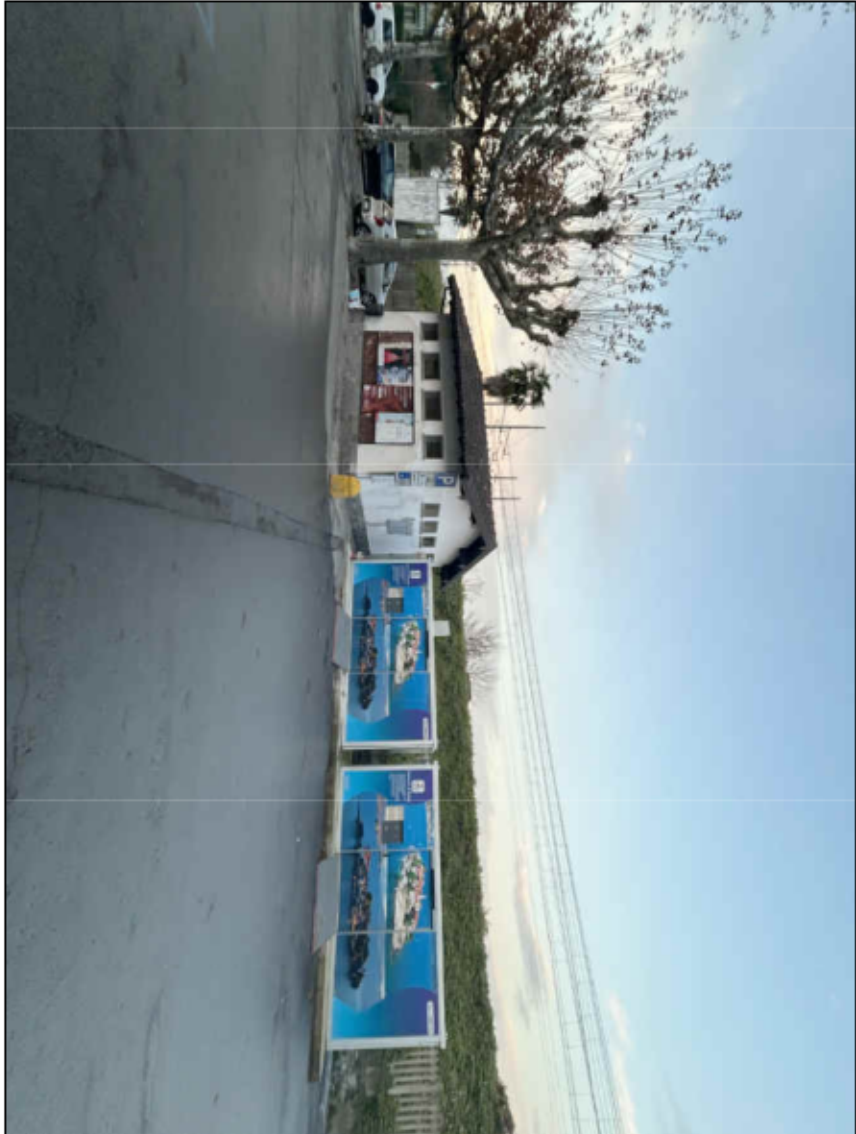


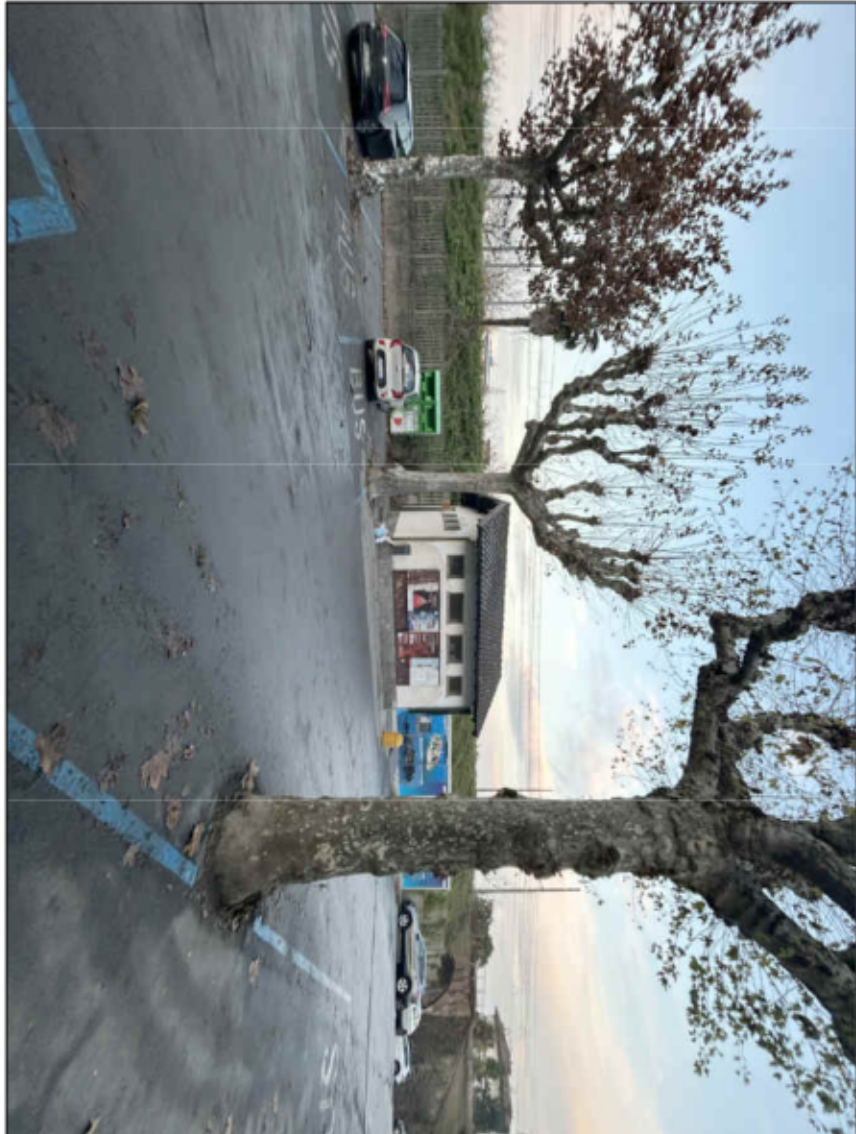
DOCUMENTAZIONE FOTOGRAFICA



1



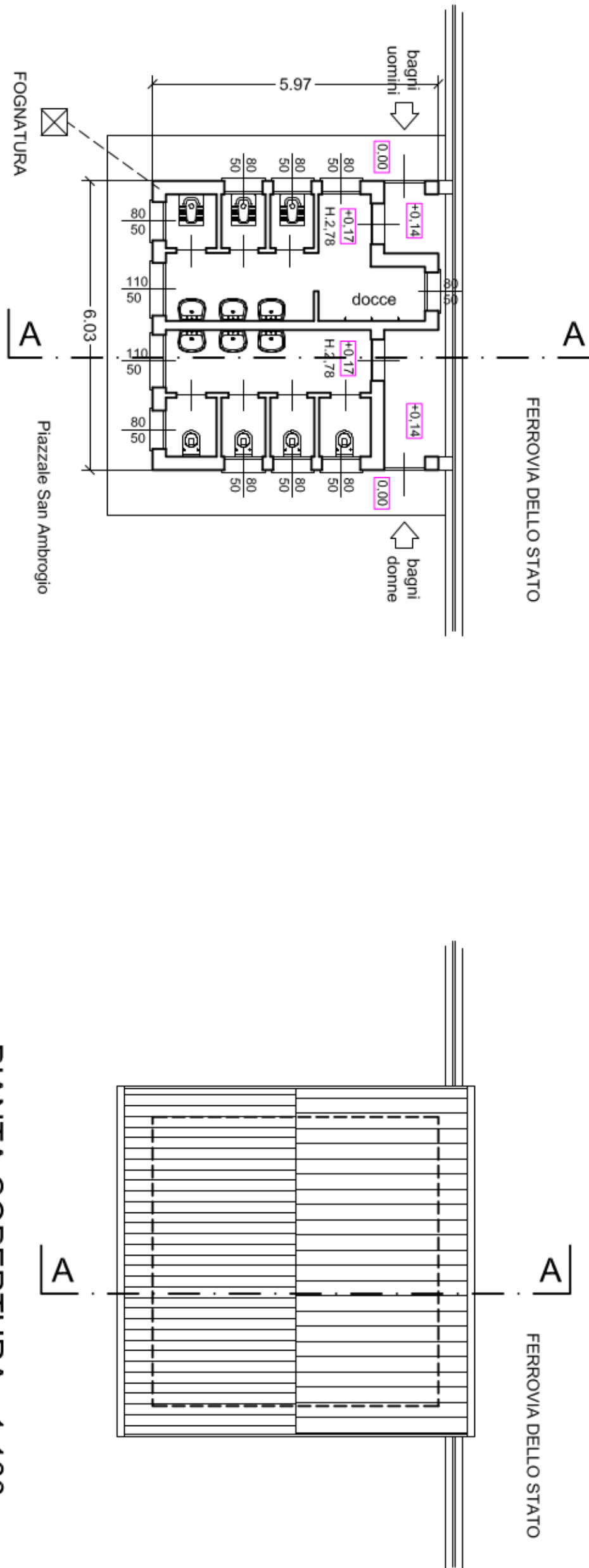
3



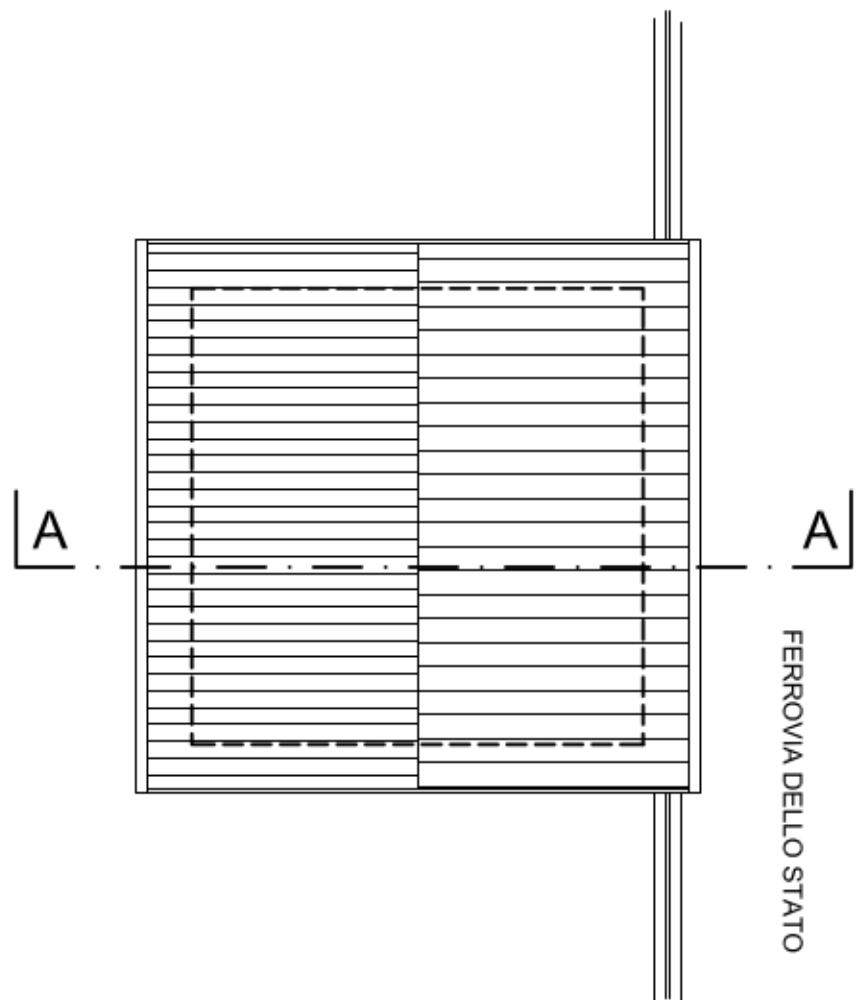
2



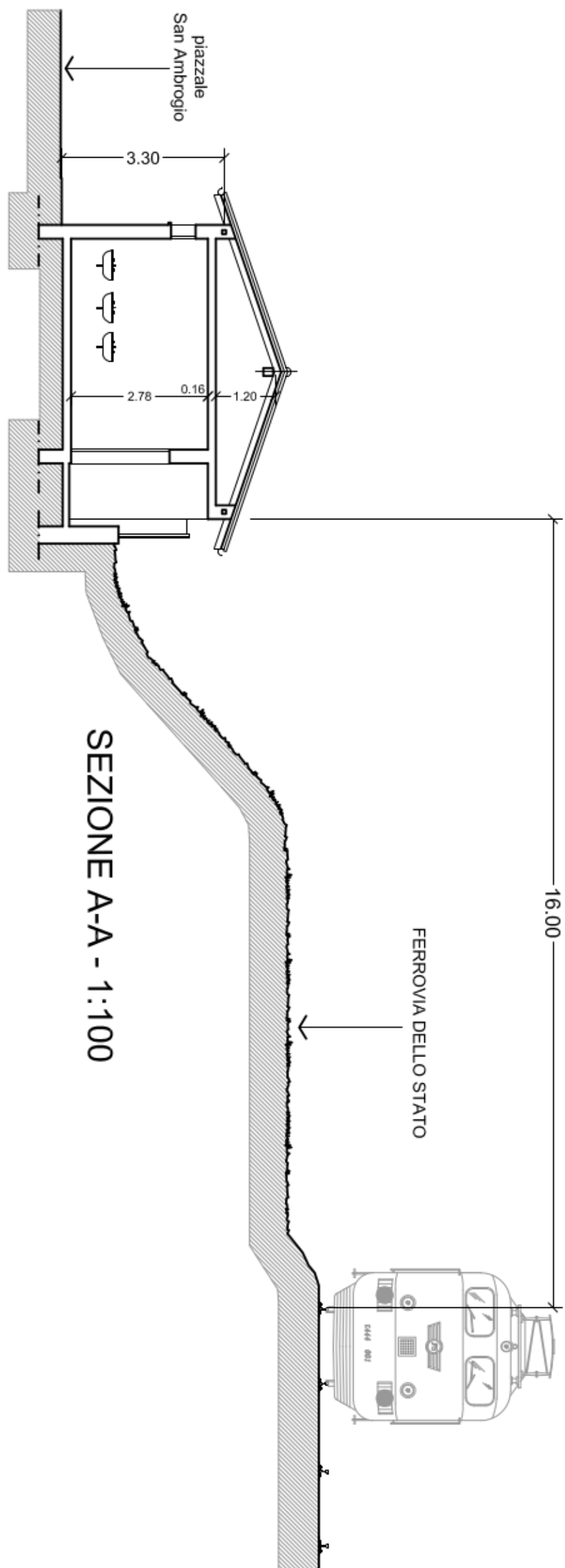
4



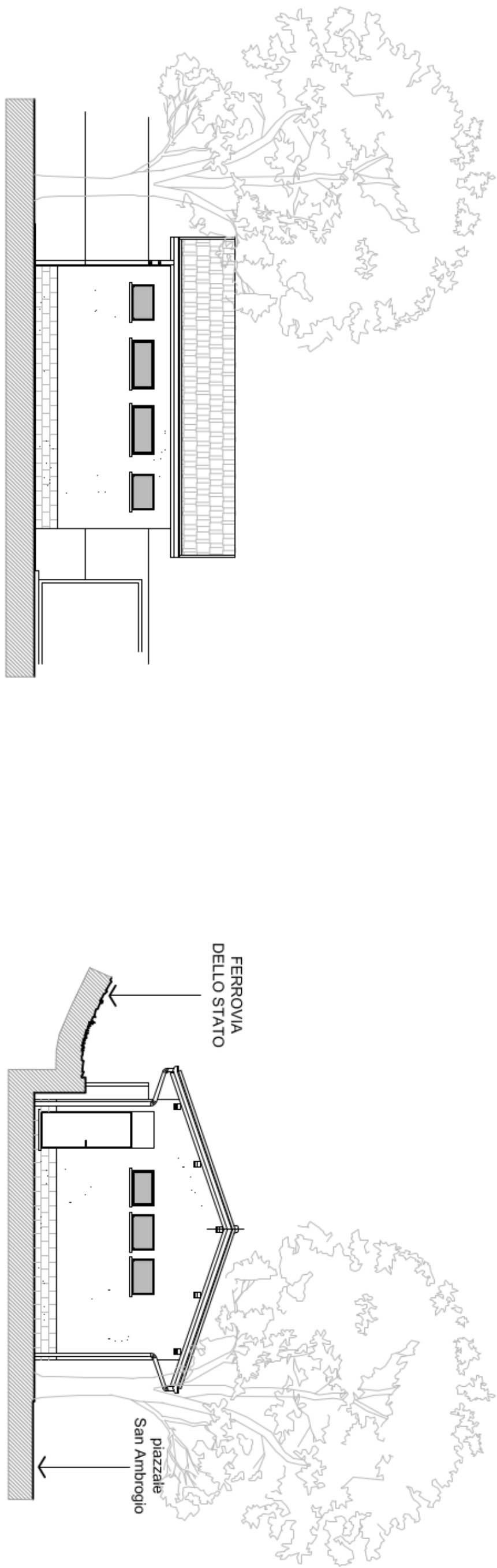
PIANTA PIANO TERRENO - 1:100



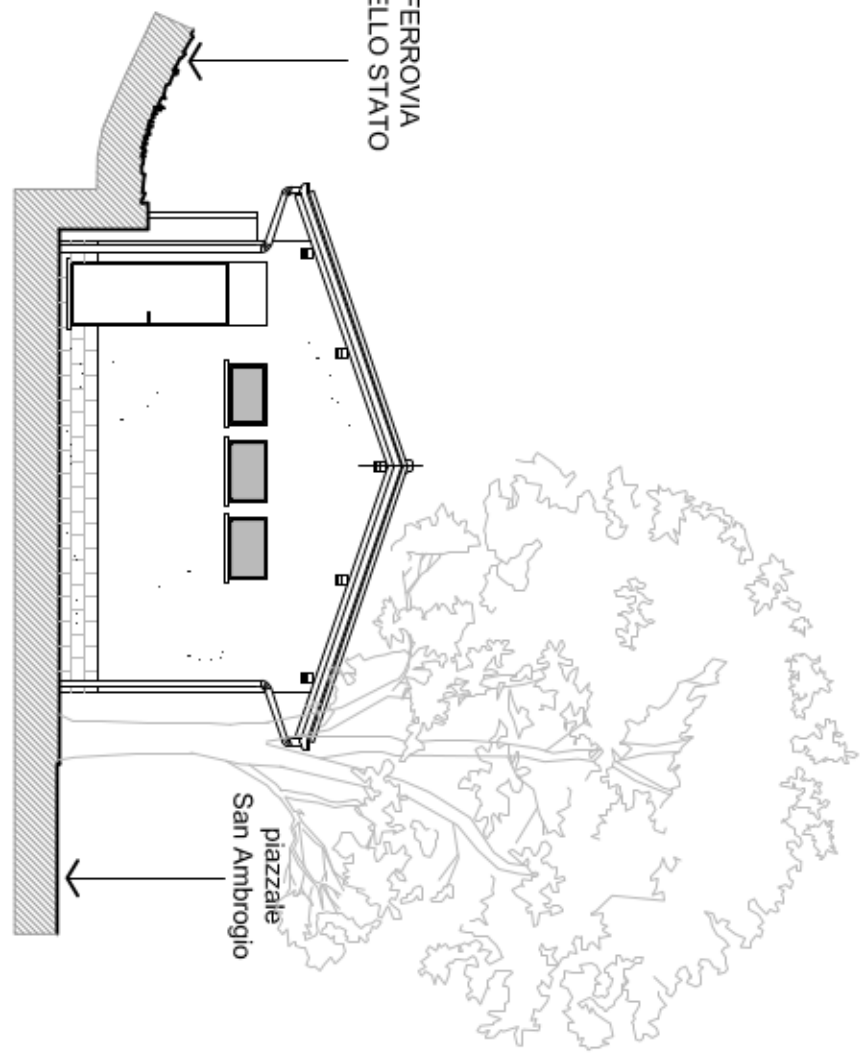
PIANTA COPERTURA - 1:100



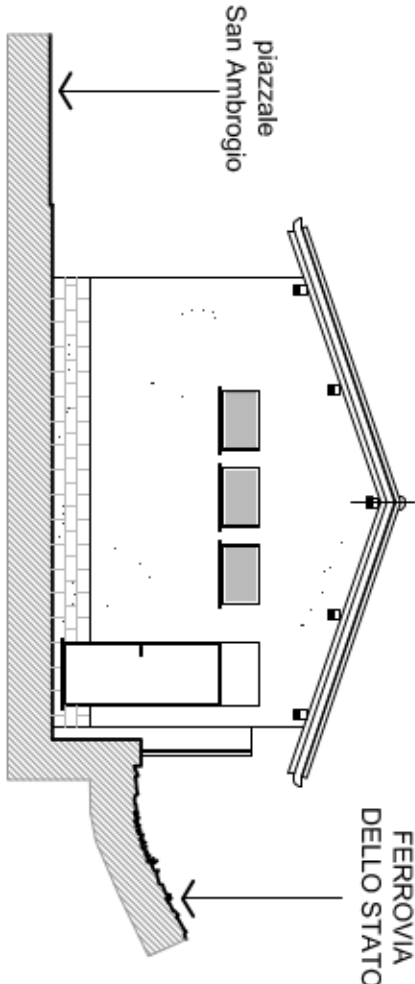
SEZIONE A-A - 1:100



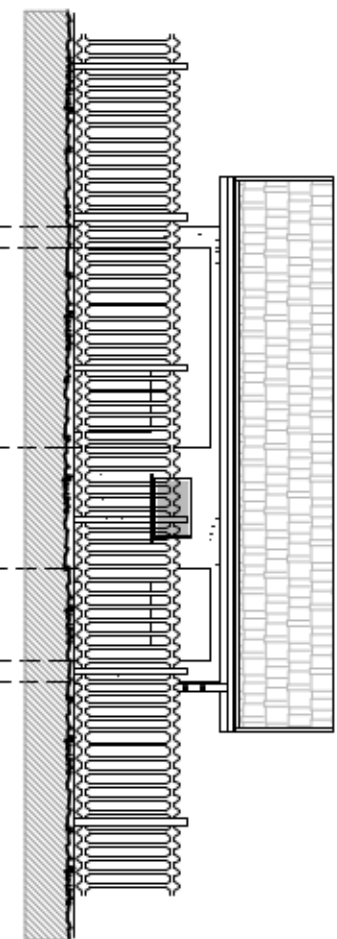
PROSPETTO VERSO SUD - 1:100



PROSPETTO VERSO OVEST - 1:100



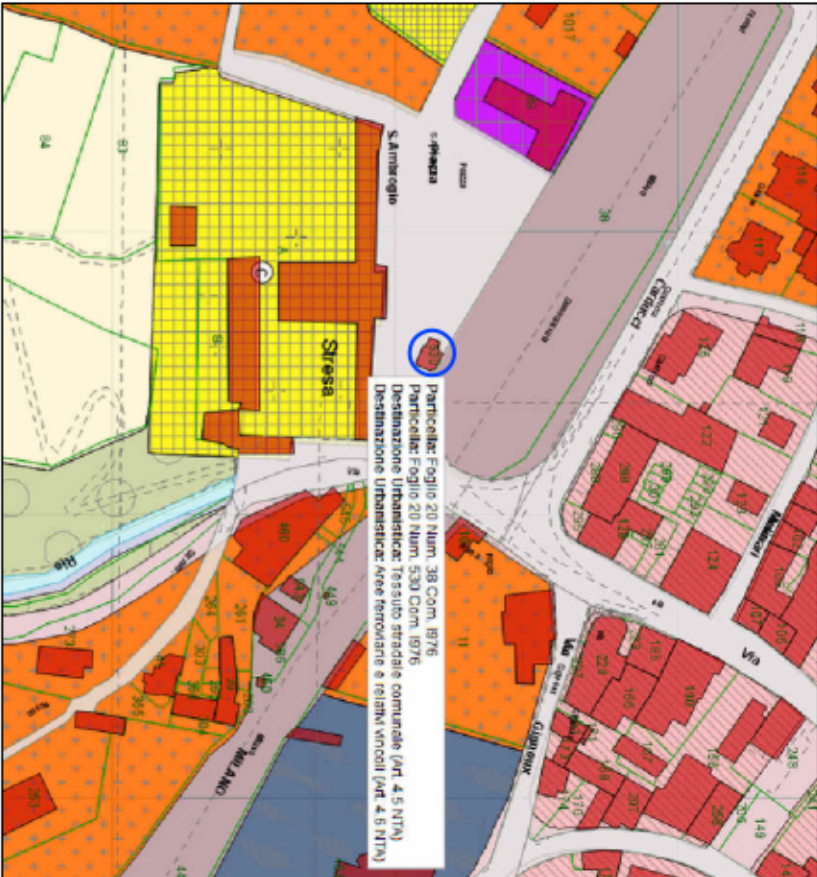
PROSPETTO VERSO EST - 1:100



PROSPETTO VERSO NORD - 1:100



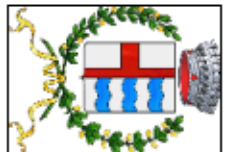
ESTRATTO MAPPA
Fig. 20 scala 1:2000



ESTRATTO P.R.G.C.
scala 1:2000

REGIONE PIEMONTE

COMUNE DI STRESA
Provincia del Verbano Cusio Ossola



OGGETTO: Ristrutturazione bagni pubblici
Piazzale Sant'Ambrogio

**PIANTE - SEZIONE
PROSPETTI
DOCUMENTAZIONE FOTOGRAFICA**

P.F.T.E.
PROGETTO FATIBILITÀ TECNICO ECONOMICA

TAVOLA N.1 - STATO ATTUALE

SCALA 1:2000 - 1:100

STRESA, 12 dicembre 2024

IL PROGETTISTA

geom. Paolo Longoni

